

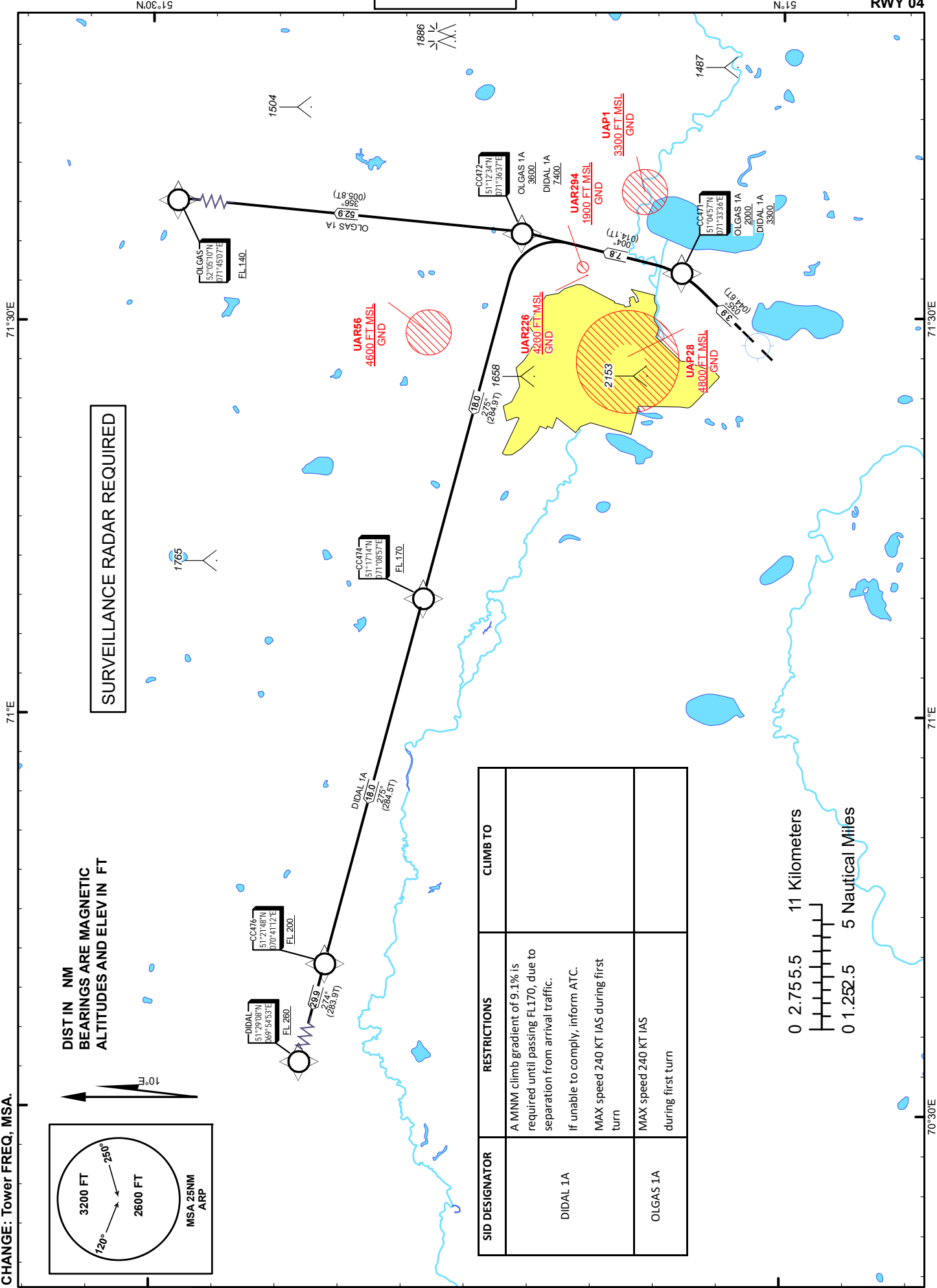
STANDARD DEPARTURE  
CHART - INSTRUMENT  
(SID) - ICAO

TRANSITION ALTITUDE  
10000 FT

ASTANA TOWER 135.5  
ASTANA APPROACH 124.6  
ASTANA RADAR 120.7  
ASTANA ATIS(EN) 129.5  
ASTANA ATIS(RU) 128.3

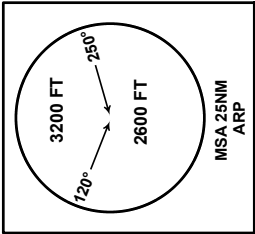
DIDAL 1A, OLGAS 1A  
(RNAV 1 SID BASED ON GNSS)

ASTANA  
NURSULTAN NAZARBAYEV  
INTERNATIONAL AIRPORT  
RWY 04

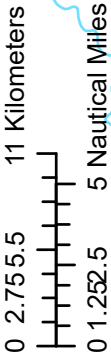


SURVEILLANCE RADAR REQUIRED

DIST IN NM  
BEARINGS ARE MAGNETIC  
ALTITUDES AND ELEV IN FT



SID DESIGNATOR	RESTRICTIONS	CLIMB TO
DIDAL 1A	A MINM climb gradient of 9.1% is required until passing FL170, due to separation from arrival traffic. If unable to comply, inform ATC. MAX speed 240 KT IAS during first turn	
OLGAS 1A	MAX speed 240 KT IAS during first turn	



**TABULAR  
DESCRIPTION**

DIDAL 1A RWY04											
Serial Number	Path Descriptor	Waypoint Identifier	Fly - over	Course °M(°T)	Magnetic Variation(°)	Distance NM	Turn Direction	Altitude FT	Speed KT	VPA (°)	Navigation Specification
10	CF	CC471	-	35(44.6)	10	3.9	-	+3300	-240	5.2	RNAV1
20	TF	CC472	-	4(14.1)	10	7.8	L	+7400		5.2	RNAV1
30	TF	CC474	-	275(284.9)	10	18	L	+FL170		5.2	RNAV1
40	TF	CC476	-	275(284.5)	10	18	-	+FL200		1.9	RNAV1
50	TF	DIDAL	-	274(283.9)	10	29.9	-	+FL260		1.9	RNAV1

**WAYPOINT LIST**

DIDAL 1A		
Waypoint Identifier	Coordinates	
DER	510210.90N	0712915.64E
CC471	510457.35N	0713335.86E
CC472	511233.52N	0713637.17E
CC474	511713.85N	0710857.33E
CC476	512147.69N	0704111.75E
DIDAL	512908.00N	0695453.00E

**TABULAR  
DESCRIPTION**

OLGAS 1A RWY04											
Serial Number	Path Descriptor	Waypoint Identifier	Fly - over	Course °M(°T)	Magnetic Variation(°)	Distance NM	Turn Direction	Altitude FT	Speed KT	VPA (°)	Navigation Specification
10	CF	CC471	-	35(44.6)	10	3.9	-	+2000	-240	1.9	RNAV1
20	TF	CC472	-	4(14.1)	10	7.8	L	+3600		1.9	RNAV1
30	TF	OLGAS	-	356(5.8)	10	52.9	L	+FL140		1.9	RNAV1

**WAYPOINT LIST**

OLGAS 1A		
Waypoint Identifier	Coordinates	
DER	510210.90N	0712915.64E
CC471	510457.35N	0713335.86E
CC472	511233.52N	0713637.17E
OLGAS	520510.00N	0714507.00E